

Luminaire with a higher protection rating - Opal diffuser - direct distribution

Housing made of glass-fibre reinforced polyester, with PUR foam age-resistant sealing in the surrounding edge, stainless steel diffuser clips, device mount made of sheet steel painted white. Housing with increased chemical resistance. Housing colour light grey; Light distribution direct distribution by means of Opal diffuser of acrylic glass, deep-drawn acrylic glass diffuser with an opal smooth surface, UGR (4H/8H) 26.5. Integrated driver. Electrical connection via 5-pole connection terminal with plug-in contacts.. Swivel mounting bracket SBB to be ordered separately.

CHARACTERISTICS

Order number	56615036610
EAN number	4020863340361
Commodity code	94051140
Certification mark	IP 65, Protection class I, F, D, HACCP DIN10500/Food/IFS/BRC, Indoor, CE
Impact resistance (IK rating)	IK03 (0°C), IK04 (25°C)
Ambient temperatur	ta 0°C to 25°C
Special properties	Ready for IoT
Warranty period	5 years
State funding programs	BEG - Federal funding for efficient buildings (valid only for Germany)

ELECTRICAL ENGINEERING

Controller	Electronic driver DALI2 (1 pcs.)
System output	70W
Mains voltage	230V/50Hz
Circuit breakers (inrush current)	9 pieces/B10, 15 pieces/B16, 15 pieces/C10, 25 pieces/C16
Energy efficiency class/light source	C

LIGHTING TECHNOLOGY

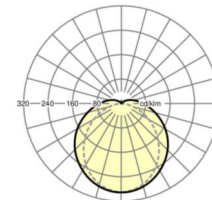
Placement	LED, Colour rendering/Light colour CRI ≥ 80 / 4000K
Colour tolerance (MacAdam)	3SDCM
Photobiological safety (Luminaire)	RG0
Nominal luminous flux	10218lm
LED service life	50000h L80/B10 (Tq 25°C)
Luminaire luminous efficiency	147lm/W
UGR lat./long.	26.5 / 23.9

MECHANICS

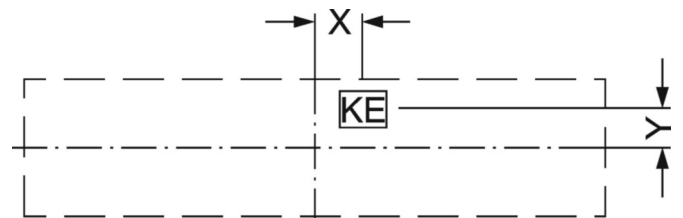
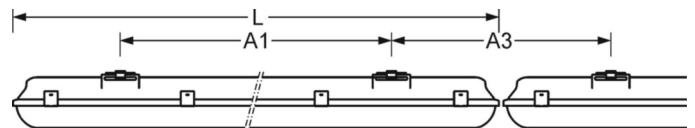
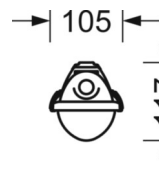
Housing colour	light grey
Dimensions (LxWxH/DxH)	1600mm x 105mm x 117mm
Weight (net)	2.4kg
Cable entry KE (X/Y)	800mm/0mm
Type of installation	Ceiling-mounted single installation, Pendant individual mounting, Wall mounting, Pendulum mounting rail assembly on chain, Ceiling-mounted mounting rail installation

DEEP-LINK

<https://www.regiolux.de/en/article/56615036610>



Reference	LED 10200lm 840
ηLB	100 %
Φ ↓/↑	91 % / 9 %
UGR lat./long.	26.5 / 23.9



Dimensions

L	1600 mm	Length
B	105 mm	Width
H	117 mm	Height
A1	1000 mm	Mounting distance single mounting
A3	605 mm	Mounting distance between luminaires in a light run arrangement
X	800 mm	Distance cable infeed to the center of the luminaire on the X-axis
Y	0 mm	Distance cable infeed to the center of the luminaire on the Y-axis
